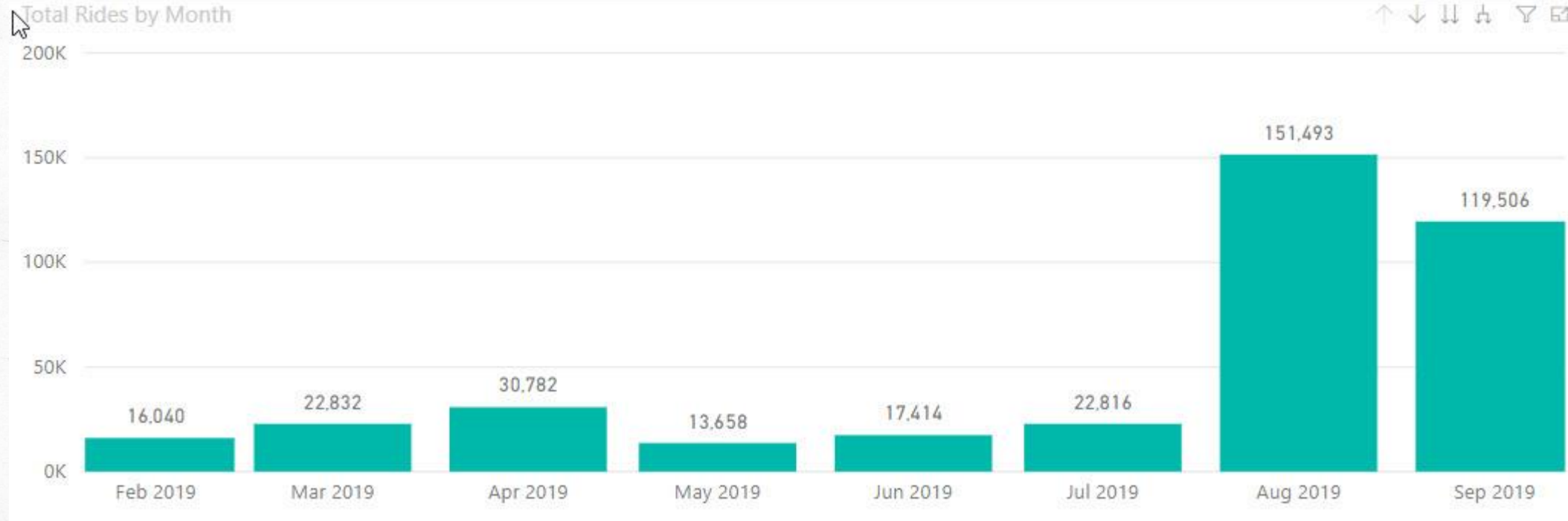




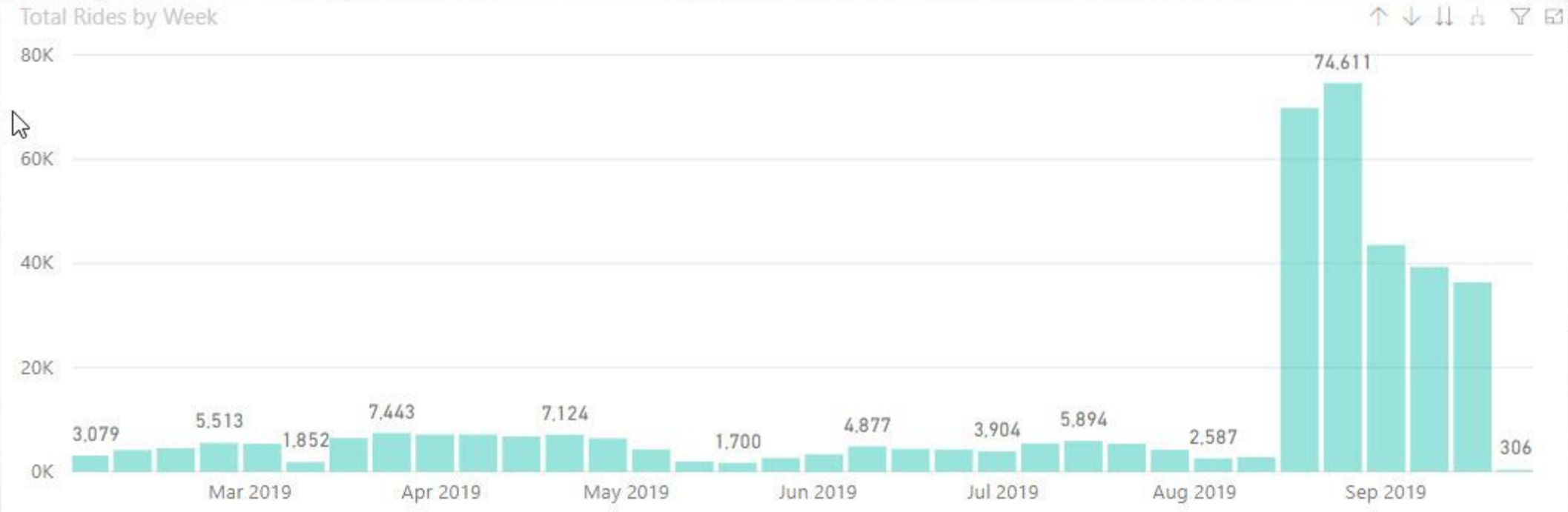
TEXAS A&M UNIVERSITY
Transportation Services

Texas A&M University Bike Share

VeoRide



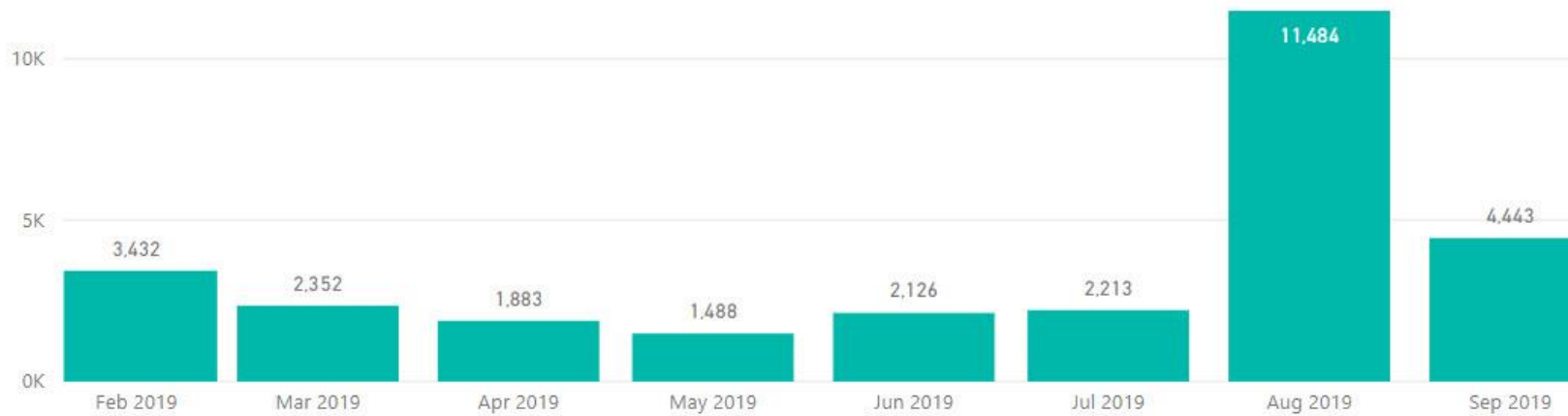
August surpassed all previous 6 months combined



69,827 during the Howdy Week promotional Kickoff to Football Thursday
74,611 during the first week of Fall semester



Total User Signups by Month



USERS

29,421

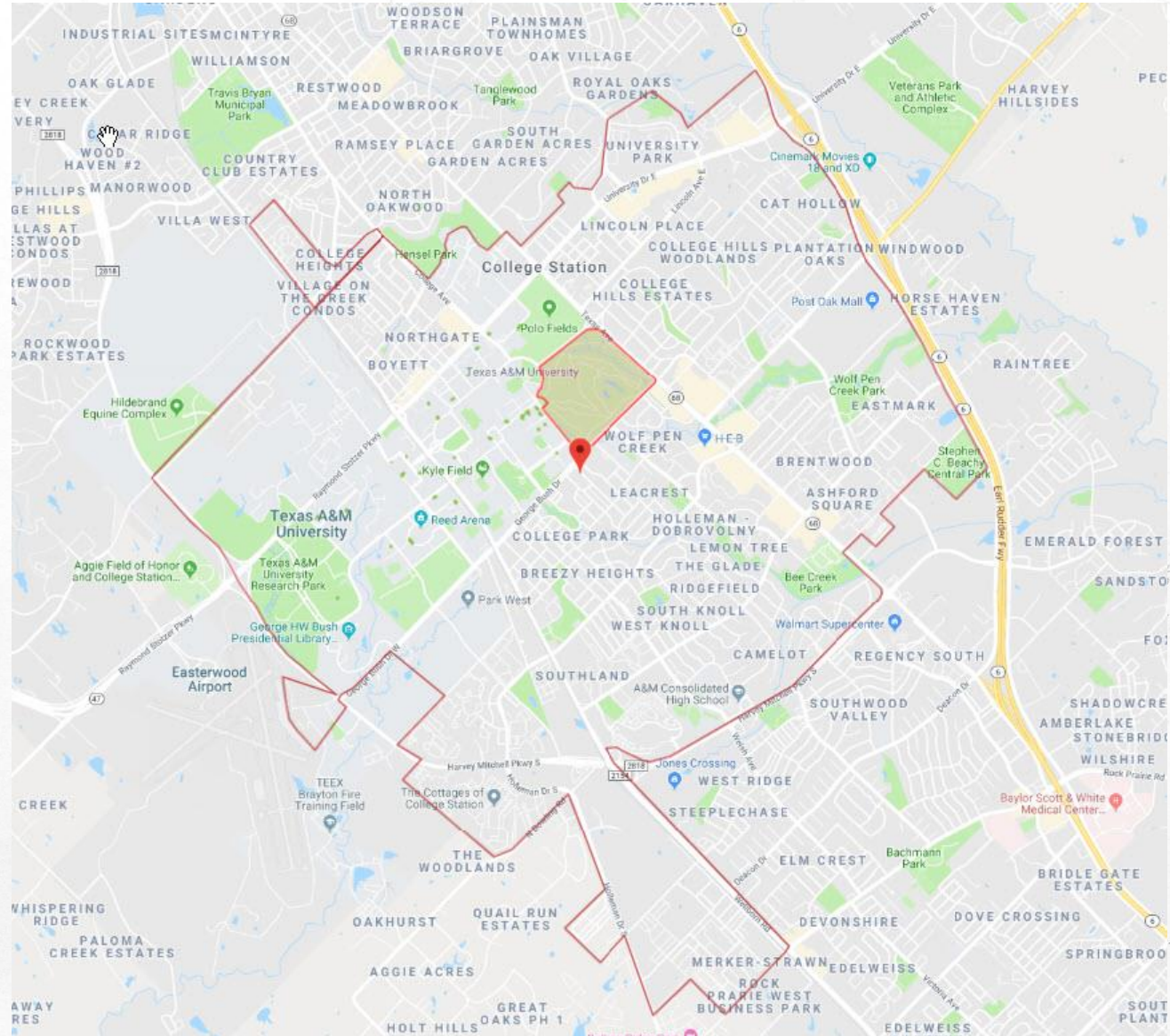
Total Users

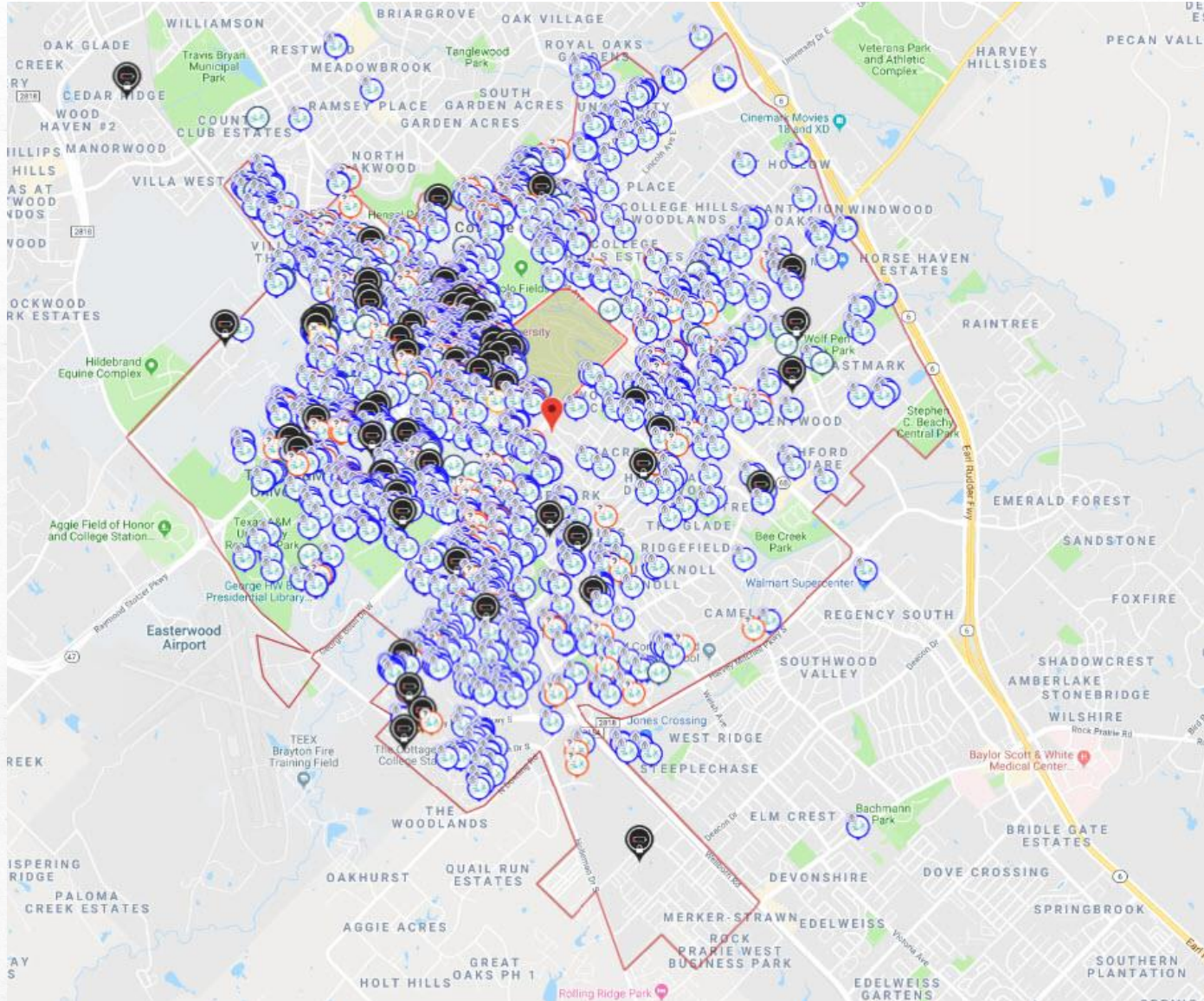
More users added in August, September ytd than previous 6 months combined



Current Geofence

- Same as Ofo with the exception of small area added to include Reveille Ranch and Z Islander





Fleet Size

- 2608 total bikes in fleet
- Roughly 10% in need of parts such as front or rear wheel



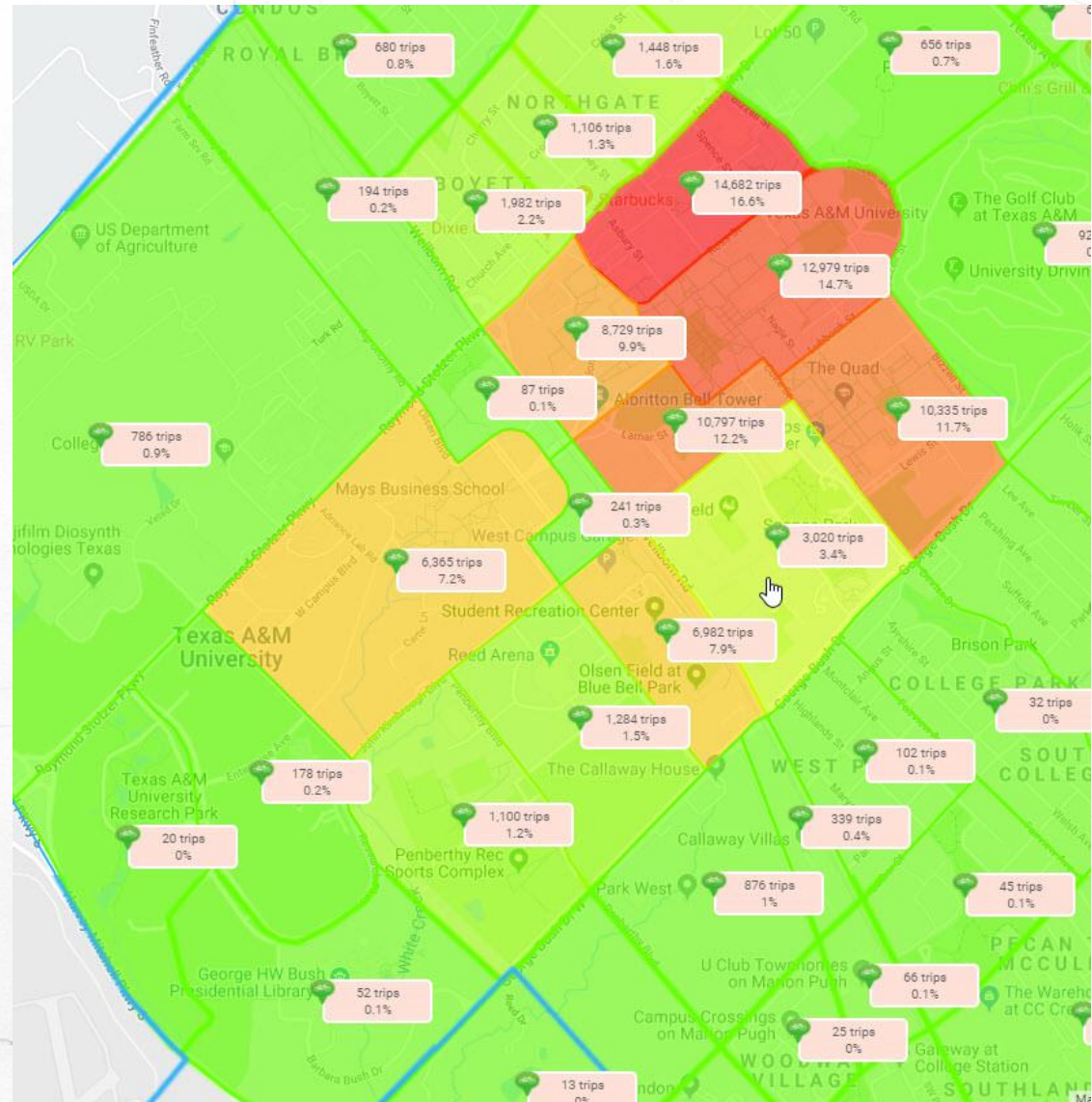
Highest Use Zones

TAMU Campus- 87%

Main Campus- 68.5%

- Engineering area-16.6%
- Central Campus-14.7%

West Campus-18.5%





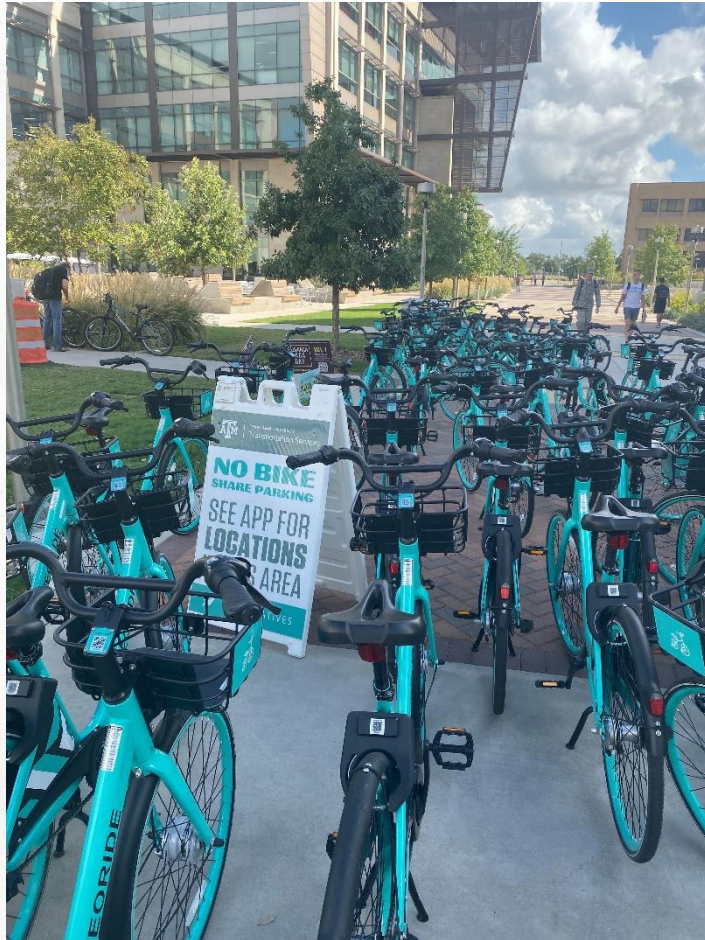
Operations

Three Tiers:

- Trucks- 2 VeoRide trucks with their staff. Off campus and bulk rebalancing on campus. With and/or without trailer.
- SMV's- 2 Ranger ATV's used to tidy and rebalance on campus. Can be either student workers or VeoRide staff.
- E-bikes- 4 units available for student workers to assess campus and tidy parking areas.

Each tier reports up and down the chain and we use various Slack channels to communicate.

- Examples would include: #rebalancing, #gameday, #maintenance



Fleet Management

- Some areas require more attention each day because of volume and storage capacity
- We use the term “rebalance” to define movement of bikes from destinations to origin locations like dorms, designated parking areas, etc.







TAMU Alterna...
Byron

#violations
☆ | 👤 16 | 📌 0 | Violations that need user contact. No TIDY here please.

Lot 100: 1976
Image from iOS



7:53 AM Lot 100: 0532, 3022, 2367, 0702
Image from iOS



Message #violations

Monitoring Violations

- Workers report in Slack Channel #violations with picture and bike number(s)
- Message is sent to last known user
 - 1st and 2nd offence is a warning
 - Each offence after is a fine at \$1 increments
 - Habitual abusers can be suspended and/or blocked entirely.



Final Points

Work in Progress

- Operationally, we learn from each new day, football game, special event, etc.

Largest Challenge

- Parking in a Bike Rack or Designated Parking area
- Questions/ Suggestions...

